

SUNNY BEAM USB-Treiber

Installing the Sunny Beam USB driver



Version: 1.3

Mat.-Nr.: 98-0009013

The Sunny Beam USB driver is necessary in order to connect a Sunny Beam to a PC.

The Sunny Beam USB driver works with the following operating systems:

- Windows 2000
- Windows XP (32-bit and 64-bit)
- Windows Vista (32-bit)

Windows XP (32-bit), Windows 2000: see section 1 .

Windows XP (64-bit), Windows Vista (32-bit): see section 2 .

Which operating system am I using?

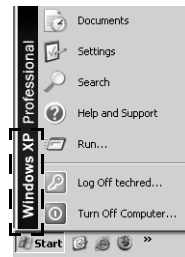
- Click on [Start]. The PC operating system is displayed (see figure).

32-bit or 64-bit?

Standard PCs and laptops are equipped with 32-bit operating systems.

64-bit operating systems must be specially ordered.

- Right click on "My Computer" and select "Properties."
The system properties are displayed.
- Select the "General" tab.
- It is a 32-bit version if nothing is written after the name of the operating system.
The designation 64-bit is written behind the name of 64-bit versions.



1 Windows XP (32-bit) / Windows 2000

Two installation options are available.

Installation from a CD (recommended): see section 1.1 .

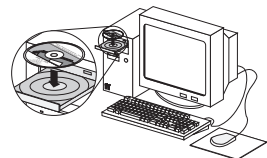
Installation from a PC, once the driver has been downloaded: see section 2.1 .

1.1 Installation from a CD

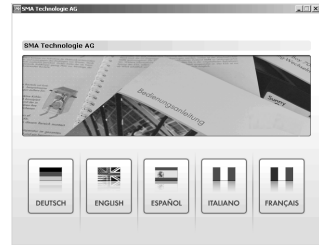
Although this description applies to Windows XP (32-Bit), installation on systems operating Windows 2000 is similar.

The Sunny Beam USB driver is on the CD provided with the Sunny Beam.

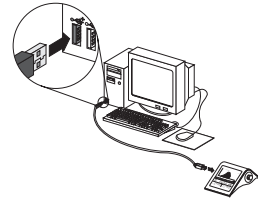
1. Insert the provided SMA CD into the CD-ROM drive of the PC.



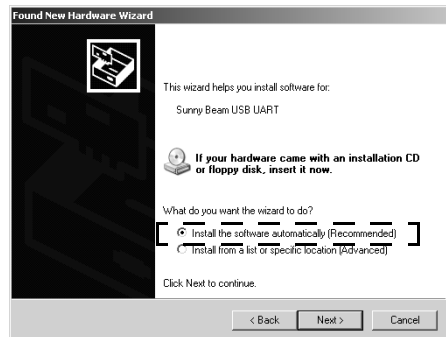
- If this window opens, close it. It is not required for the automatic installation.



- Connect the Sunny Beam to the PC using the provided USB cable.



One of the windows displayed below will open (Hardware Wizard).
If no window opens, see section 3.1 .



- Select "No, not this time" and click [Next].
The window seen on the right is displayed.

- Select "Install the software automatically (Recommended)" and click [Next].
The PC searches for the driver in the folder and then the installation starts automatically.

- Now click [Finish].

The installation has been completed successfully.

2 Windows 2000, Windows XP (32-bit,64-bit), Windows Vista

2.1 Installation from a PC, once the driver has been downloaded

Installation of the driver from a PC is the same for Windows XP and Windows 2000. Installation with Windows Vista is similar.



Zip Program

The Sunny Beam USB driver is available as a zip file in the download area or on the provided SMA CD. You require a zip program to open the zip file.



Windows Logo Test

During the installation process of an SMA Windows driver, Windows will warn you that the software you are installing for the hardware has not passed the Windows logo test.

This warning is generally displayed when third party drivers are installed. It indicates that the manufacturers driver has not been tested in the Microsoft "Windows Hardware Quality Labs (WHQL)." This chargeable service by Microsoft to grant a digital signature for a driver is often not availed of.

We have taken particular care in testing and approving the driver. You can thus ignore Microsofts recommendation to abort the installation and install the driver by clicking the "Continue installation" button.

2.2 Saving the USB Driver on the PC

The Sunny Beam USB driver is available as a zip file in the download area at www.SMA.de or on the provided SMA CD.

Download area

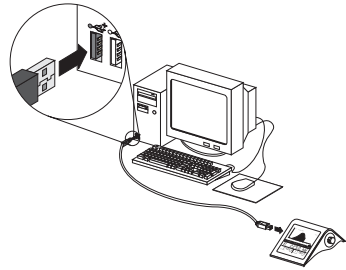
1. Download the Sunny Beam USB driver for the relevant operating system from the download area at www.SMA.de.
2. Unzip the files in a folder on the PC, e.g. in a newly created folder with the name "Sunny Beam USB."
3. Install the USB driver as described in section 2.3 .

SMA CD

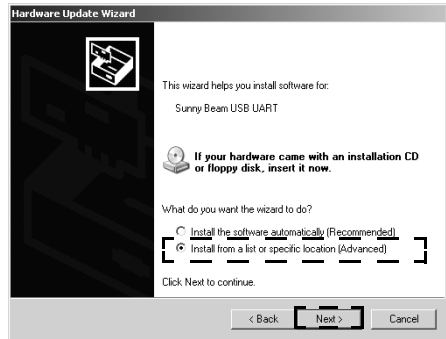
1. Insert the provided SMA CD into the CD-ROM drive of the PC.
2. Under "Communication/Sunny Beam/Driver" on the CD, select the zip file of the driver for the relevant operating system and save it on your PC.
3. Unzip the files in a folder on the PC, e.g. create a new folder and name it "Sunny Beam USB."
4. Install the USB driver as described in section 2.3 .

2.3 Installing the USB Driver

1. Connect the Sunny Beam to the PC using the provided USB cable.



One of the windows displayed below will open (Hardware Wizard). If no window opens, see section 3.1 .



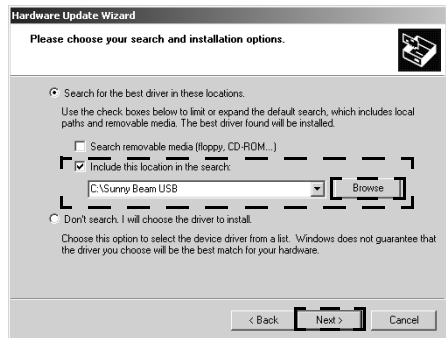
- Select "No, not this time" and click [Next].
The window seen on the right is displayed.

- Select "Install from a list or specific location (Advanced)" and click [Next].

The window shown to the right will open.

2. Click [Browse] and select the folder in which the unzipped files are saved.
3. Click on [Next].

The PC searches for the driver in the selected folder and then the installation starts automatically.



- 4. Click on [Finish].

The installation has been completed successfully.



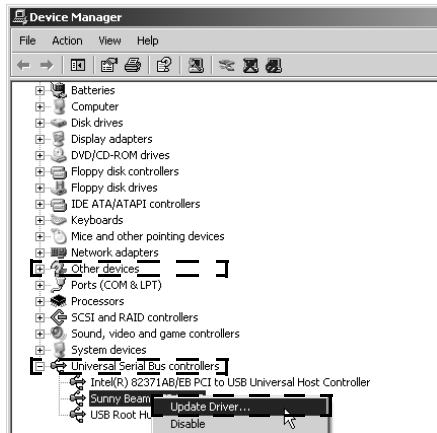
3 Troubleshooting

3.1 Starting the Hardware Wizard

- Select "Start/Settings/Control Panel/System/Hardware/Device Manager".
- Right click "Sunny Beam" and select "Update Driver."

If Sunny Beam is not listed as displayed in the figure, it is listed under "Other devices."

The "Found New Hardware Wizard" window will open.



The information contained in this document is the property of SMA Solar Technology AG. Publishing its content, either partially or in full, requires the written permission of SMA Solar Technology AG. Any internal company copying of the document for the purposes of evaluating the product or its correct implementation is allowed and does not require permission.

Exclusion of liability

The general terms and conditions of delivery of SMA Solar Technology AG shall apply.

The content of these documents is continually checked and amended, where necessary. However, discrepancies cannot be excluded. No guarantee is made for the completeness of these documents. The latest version is available online at www.SMA.de or from the usual sales channels.

Guarantee or liability claims for damages of any kind are excluded if they are caused by one or more of the following:

- Damages during transportation
- Improper or inappropriate use of the product
- Operating the product in an unintended environment
- Operating the product whilst ignoring relevant, statutory safety regulations in the deployment location
- Ignoring safety warnings and instructions contained in all documents relevant to the product
- Operating the product under incorrect safety or protection conditions
- Altering the product or supplied software without authority
- The product malfunctions due to operating attached or neighboring devices beyond statutory limit values
- In case of unforeseen calamity or force majeure

The use of supplied software produced by SMA Solar Technology AG is subject to the following conditions:

- SMA Solar Technology AG rejects any liability for direct or indirect damages arising from the use of software developed by SMA Solar Technology AG. This also applies to the provision or non-provision of support activities.
- Supplied software not developed by SMA Solar Technology AG is subject to the respective licensing and liability agreements of the manufacturer.

SMA Factory Warranty

The current guarantee conditions come enclosed with your device. These are also available online at www.SMA.de and can be downloaded or are available on paper from the usual sales channels if required.

Trademarks

All trademarks are recognized even if these are not marked separately. Missing designations do not mean that a product or brand is not a registered trademark.

SMA Solar Technology AG

Sonnenallee 1

34266 Niestetal

Germany

Tel. +49 561 9522-0

Fax +49 561 9522-100

www.SMA.de

E-Mail: info@SMA.de

© 2004 to 2008 SMA Solar Technology AG. All rights reserved

SMA Solar Technology AG

www.SMA.de

Sonnenallee 1

34266 Niestetal, Germany

Tel.: +49 561 9522 4000

Fax: +49 561 9522 4040

E-Mail: Vertrieb@SMA.de

Freecall: 0800 SUNNYBOY

Freecall: 0800 78669269

